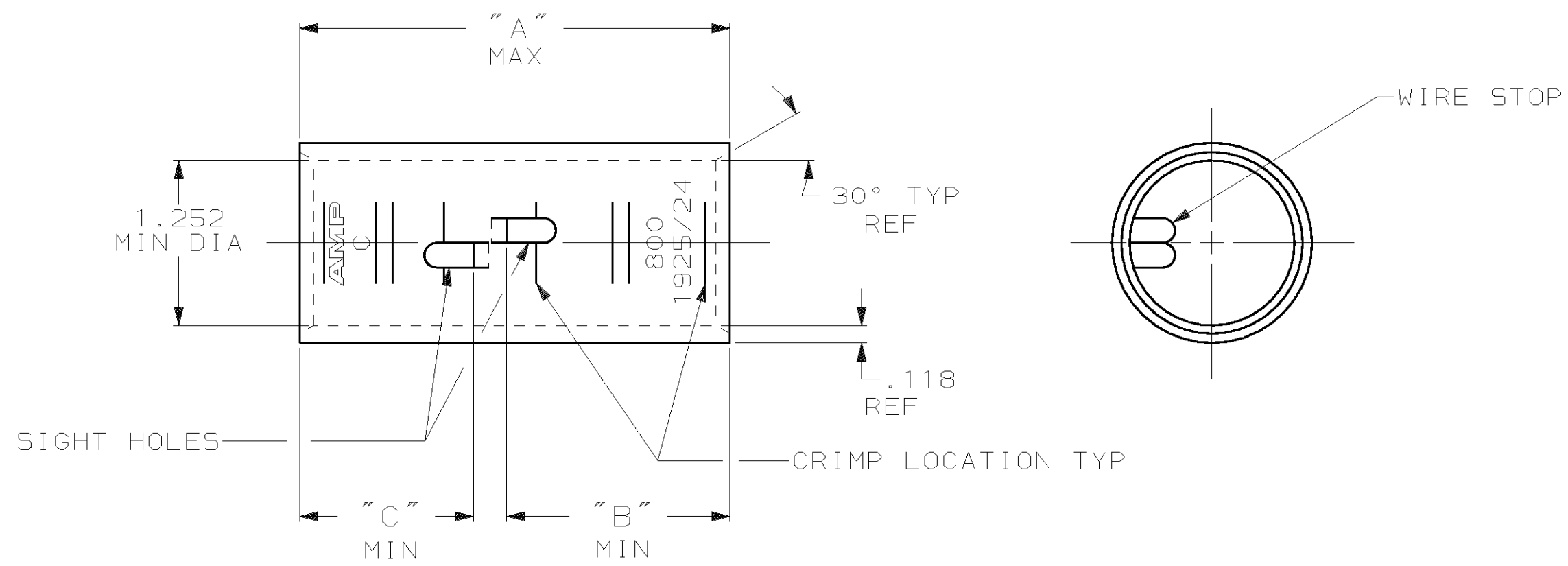


THIS DRAWING IS UNPUBLISHED. RELEASED FOR PUBLICATION, 19
 © COPYRIGHT 19 BY AMP INCORPORATED. ALL INTERNATIONAL RIGHTS RESERVED.

LOC	DIST	P	F	REVISIONS				
G	86			ZONE	LTR	DESCRIPTION	DATE	APPD
					M	REV PER 0G3A-0637-01	030CT02	JR/MS



- 1 TIN PL .000150 MIN THK MIL-T-10727
- 2 PART NO: 324469; .486 LB.
PART NO: 1-324469-0; .486 LB.
PART NO: 2-324469-2; .548 LB.

1.32	1.69	3.31	△	750-850 MCM	COPPER ASTM-B-75 ANNEALED	2-324469-2
1.32	1.32	2.96	CLEANED			1-324469-0
"C"	"B"	"A"	△	WIRE RANGE	MATERIAL	324469
DO NOT SCALE PRINT. UNLESS SPECIFIED DIMENSIONS IN INCHES TOLERANCES ON: 2 PLC DEC ± - 3 PLC DEC ± - ANGLES ± -			DR 4/24/89 DK SCHRUM	AMP INCORPORATED Harrisburg, Pa. 17105		
MATERIAL SEE TABLE			CHK 4/24/89 MS FEHER			
FINISH SEE TABLE			APPD 11/8/89 WJ VOCKROTH	NAME SPLICE, BUTT, AMPPOWER WIRE SIZE: 800 MCM		
			APPD 11/8/89 TL SHUTTER	SIZE B	FSCM NO 00779	DRAWING NO 324469
			PRODUCT SPEC -	SCALE 1:1	SHEET 1 OF 1	
			APPLICATION SPEC -			
			WEIGHT △			